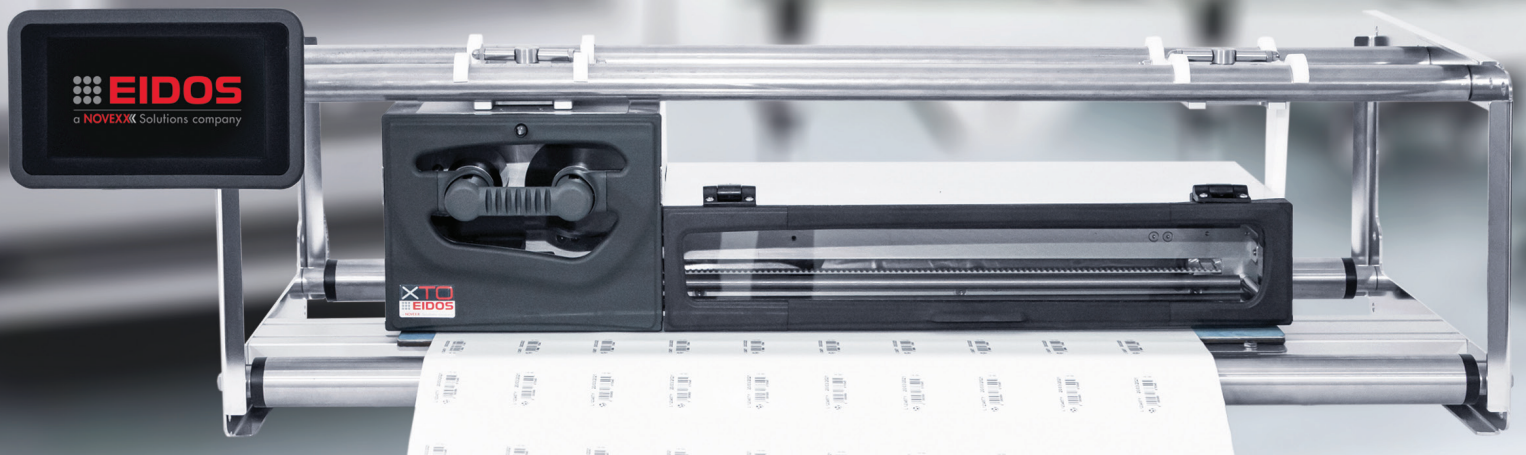
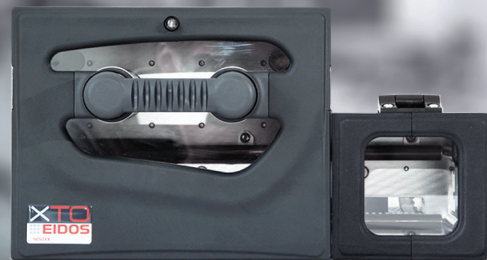
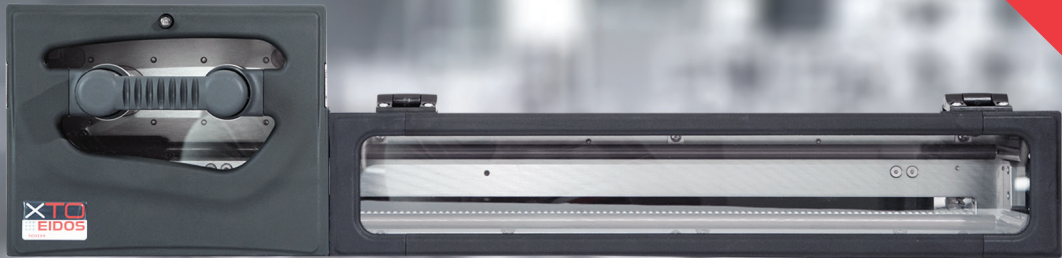


INTERMITTENT






XTO 2i.20/40/60

53 x 200/400/600 MM PRINT AREA

- Perfect for integration into intermittent packaging systems
- Best quality overprinting with up to 600 mm print length
- For all applications in the food, pharmaceutical, personal care, automotive or other industries

 **EIDOS**
a NOVEXX Solutions company

TECHNICAL SPECIFICATIONS XTO2i.20/40/60

		200 MM PRINT LENGTH	400 MM PRINT LENGTH	600 MM PRINT LENGTH
				
Printing	Printing Mode	Intermittent		
	Technology	Thermal Transfer		
	Resolution	300 dpi; 12 dots/mm		
	Speed	300 mm/sec (within safe operating area); Up to 800 mm/sec (feasibility check necessary)		
	Print rate	Up to 45 prints/min with 200 mm print length	Up to 25 prints/min with 400 mm print length	Up to 18 prints/min with 600 mm print length
		Check safe operating area for other label lengths		
	Maximum print area	53 x 200 mm (W*L)	53 x 400 mm (W*L)	53 x 600 mm (W*L)
	Ribbon length	1200 mtr; on 1" plastic core; roll diameter max. 110 mm		
	Ribbon Save	Yes		
	Ribbon qualities	Wax-resin; resin		
Fonts	Windows true type; Arial internal; various heights and shapes; unicode and UTF-8 code			
Print data	Barcodes	1- and 2-dimensional barcodes; datamatrix; QR codes; databar; PDF417		
	Logos	BMP; JPG; TIFF; PNG; GIF; PCX formats		
	Codes	All kind of date code, serial numbers, production codes, ...		
Label creation	Label design software; EIDOS Easycode design software; printer language programming			
Controller/ HMI	7" full colour capacitive touchscreen Powered via ethernet Incl. intuitive user interface. For status info, print layout WYSIWYG; multilingual, diagnostics, system settings			
	Dimensions	215*133*33 mm (W/H/D)		
	Cable length	1,5 mtr (controller to printer)		
Signal interfaces	25 D-sub Connector for IO connection to packaging machine			
Data Interfaces printer	Ethernet 10/100; 2x USB 2.0 host RS 232 (9 pins, baudrate 115200)			
Physical data printer	Power supply	Input voltage 85–265; input frequency 50/60 Hz		
	Dimensions	225*178*334 mm (W/H/D)	225*178*541 mm (W/H/D)	225*178*736 mm (W/H/D)
	Environmental	Operation temp 5°– 40° C; humidity 10 – 60% non condensing		
Options	IP 65 power supply unit Multiple selection of mounting brackets for integration in packaging machines Web User Interface (on HMI, PC or mobile device)			